

POVERTY IN “THE PEACH STATE” IS GETTING WORSE.



Poverty is defined as the state of being extremely poor. According to the data from the 2022 United States Census, roughly 38 million people are living in poverty, accounting for over 10% of the population. To be considered in poverty in the United States, one must individually earn less than 15,000 dollars a year, and for a family of 4, under 30,000.

In Georgia, almost 1.5 million people are living in poverty. Poverty in Georgia is getting increasingly worse; Not necessarily in the number of impoverished people but instead in the lack of support. For example, during covid 19, in the state of Georgia, over 100,000 Georgians were kicked off medicaid, drastically increasing hospital and medical bills of those individuals. Overall, the support for impoverished families is needed greatly, especially since children are the most affected by poverty.

(Causeiq, 2024)

(Georgia Budget and Policy Institute, 2017 & 2023)

(Healthcare.gov, 2024)

(Kids Count Data Center, 2022)

(Metro Atlanta CEO, 2021)

(Population Reference Bureau, 2007)

(Spotlight on poverty and opportunity, 2024)

(The Atlanta Journal-Constitution, 2019)

(United States Census Bureau, 2022)

(WSB-TV, 2023)

[#protecttheimpoverished](#) [#poverty](#) [#povertyinamerica](#)

April 17

GEORGIA RANKED
14TH FOR HIGHEST
PEOPLE IN POVERTY
OUT OF ALL 52
STATES/TERRITORIES.



Rank	State	%
1	Puerto Rico	41.64
2	Mississippi	18.53
3	Louisiana	18.08
4	New Mexico	17.88
5	West Virginia	16.27
6	Arkansas	15.80
7	Kentucky	15.64
8	Alabama	15.30
9	Oklahoma	14.80
10	District of Columbia	14.22
11	South Carolina	14.02
12	Texas	13.69
13	Tennessee	13.65
14	Georgia	13.21
15	New York	13.15

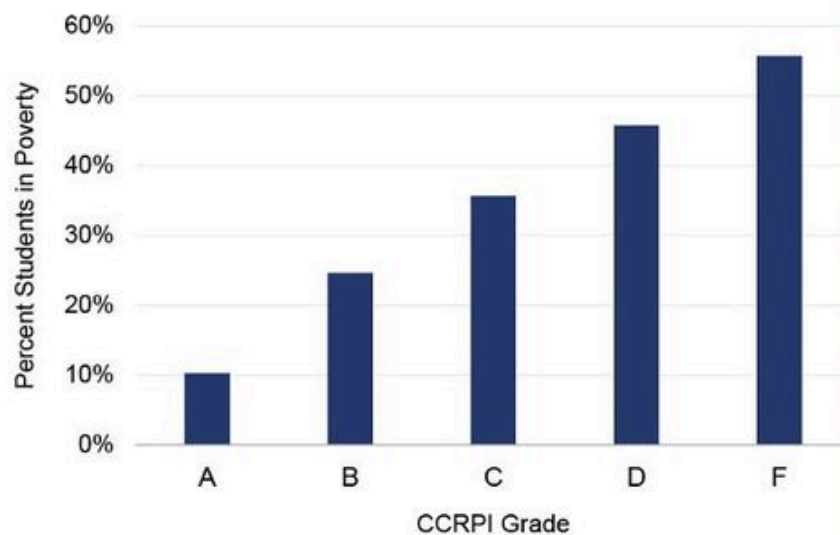
AND WHO IS MOST AFFECTED BY POVERTY? **CHILDREN.**

**THAT'S RIGHT. AS OF 2022,
17.2% OF CHILDREN IN
GEORGIA ARE LIVING
IN POVERTY.**



CHILDREN IN POVERTY'S GRADES ARE WORSENING DUE TO UNDERFUNDED SCHOOLS.

State Accountability Grades are Rankings of Parent Income



Source: GBPI analysis of 2019 CCRPI Scoring by Component and 2019 Directly Certified data.

GEORGIA BUDGET & POLICY INSTITUTE

-FOR 99% OF SCHOOLS WITH EXTREME POVERTY, MOST OF THEIR STUDENTS RECEIVE GRADES OF DS AND FS.

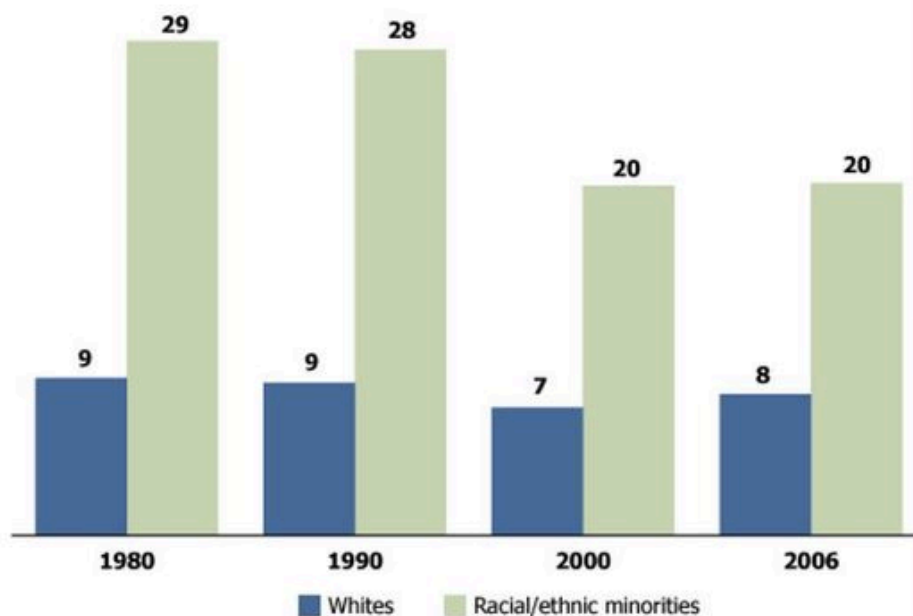
-AS SCHOOLS RECEIVE MORE FUNDING, STUDENTS ARE MORE LIKELY TO EARN BETTER GRADES.

**IN GEORGIA, 10,234
PEOPLE DON'T HAVE A
RELIABLE PLACE TO SLEEP
AT NIGHT.**



RACIAL AND ETHNIC MINORITIES ARE MOST AFFECTED BY POVERTY.

Percent living in poverty



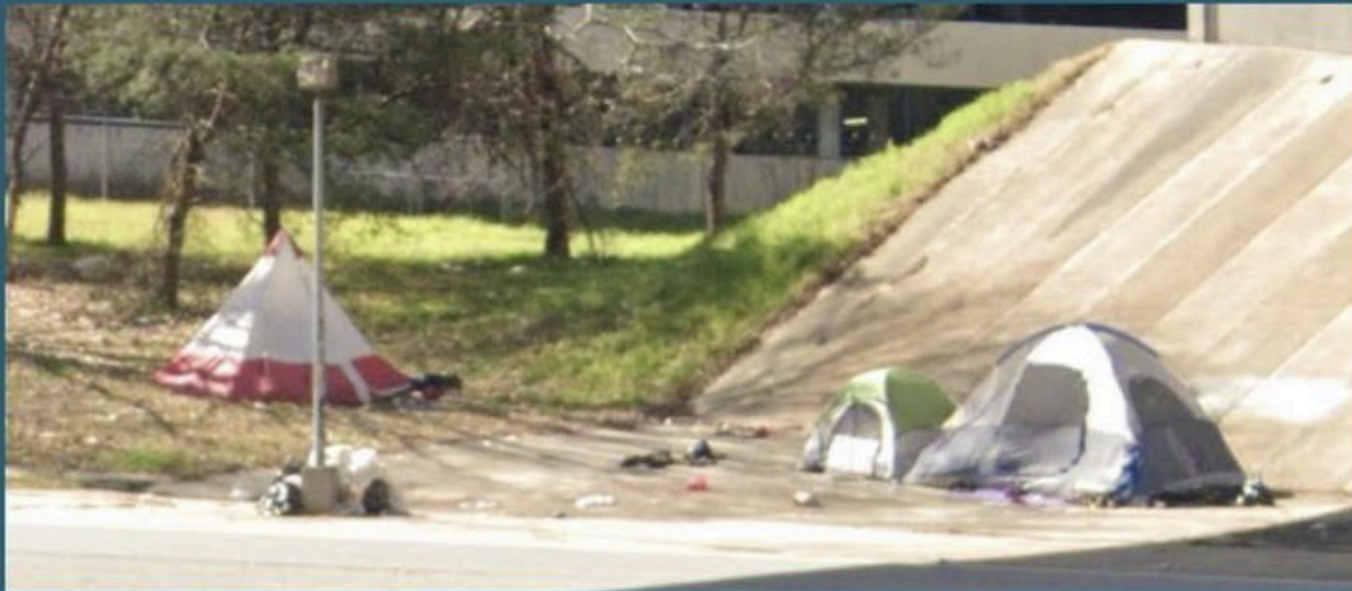
—IN 2019, AMERICAN INDIANS HAD A POVERTY RATE OF 23%, AND AFRICAN AMERICANS HAD A RATE OF 21.2%, WHILE WHITE AMERICANS ONLY HAD A RATE OF 9% IN POVERTY.

GEORGIA'S POVERTY HAS STRETCHED INTO HAVING OVER 300 SHELTERS.

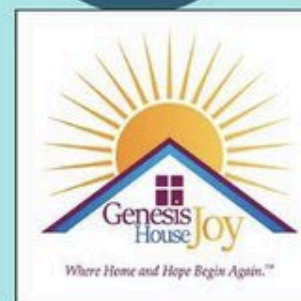


IN DOWNTOWN ATLANTA, FAMILIES AND OTHERS RESORT TO CAMPING OFF THE HIGHWAY.

-THIS IMAGE IS FROM GOOGLE MAPS, S OFF OF GA-403.



STARVING, DESPERATE^{1/5} CHILDREN NEED YOUR HELP!



Donate your time to these shelters
to help make a lasting impact